

## Features

- Universal Input 90~264VAC
- Interchangeable Plugtop with UK Adapter
- Approved to UKCA, CE, cULus, FCC, RoHS
- EN/IEC 62368-1 Safety Approved
- Meets Efficiency Level VI & (EU) 2019/1782
- EMC Class B Certified
- Single Output 12V DC



Ideal Power's 40XA-24CM1200200 24W AC/DC External Adapter Interchangeable Power Supply (PSU) Series are certified to UKCA, CE, cULus, FCC, RoHS & EN 62368-1/IEC 62368-1 Standards and comply with (EU) 2019/1782, Level VI Efficiency Regulations. These are primarily used in ITE, Audio & Video Industries and customised solutions are available upon request.

### Models

Model Number	Output Voltage (V DC)	Output Current (A)	Output Power (W)	Efficiency %
40XA024CM1200200	12	2	24	86.2

### Input Data

	Notes	Min	Typical	Max	Units
Input Voltage	100~240V AC +/- 10%	90	--	264	V AC
Input Frequency	50-60Hz +/- 5%	47	--	63	Hz
Input Current	@100~240V AC	--	--	500	mA
Inrush Current	@100~240V AC and Max load for a cold start at 25°C.	--	--	50	A
Leakage Current	For class II	--	--	0.25	mA

**Output Data**

	Conditions	Min	Typical	Max	Units
Ripple & Noise	@20MHz bandwidth with 10UF/50V Elec. Cap.0.1uF Cer. Cap.	--	--	200	mVp-p
Temperature coefficient		--	--	±0.05	%/°C
Line Regulation		--	--	±2	%
Dielectric Strength	Primary to Secondary DC4242V or AC3000V 10mA 1 minute for type test, 3 seconds for product.				
Over Current Protection	The adaptor must have a current limiting function on the output voltage. in overload mode, the output must drop to a low voltage. The OCP 4.0A max.				
Short Circuit Protection	The adaptor must withstand a continuous short circuit on the output without damage.				
Over Voltage Protection	Over voltage protection shall be included in the adaptor circuit. A single component failure must not cause an over voltage.				
Hold up Time	10ms Min at 115Vac/60Hz input at maximum load, and 20 ms minimum at 230Vac/50Hz input at maximum load.				
Turn on Time	3S Max.				

**Environmental Data**

	Conditions	Min	Typical	Max	Units
Operating Temperature		0	--	40	°C
Storage Temperature		-10	--	+60	°C
Operating Humidity		10	--	90	%
Storage Humidity		10	--	95	%

**Other Information**

	Conditions	Min	Typical	Max	Units
Insulation Resistance			10		MΩ
MTBF	@ 25°C (MIL-HDBK-217F).		50,000		hrs
Dielectric Strength	Primary to Secondary DC4242V or AC3000V 10mA 1 minute for type test, 3 seconds for product.				
Burn-In	The power supply shall withstand a minimum of 4 hours Burn-In test under full load at 35°C ~40°C room temperature, after test, product shall operate normally.				
Dimensions	83.5x49x34mm				

**EMC Emissions (2014/30/EU)**

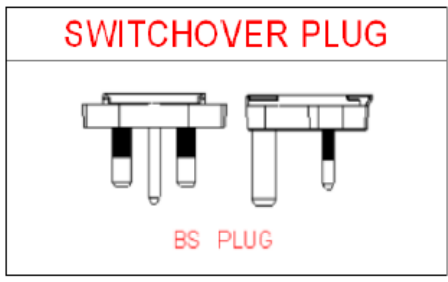
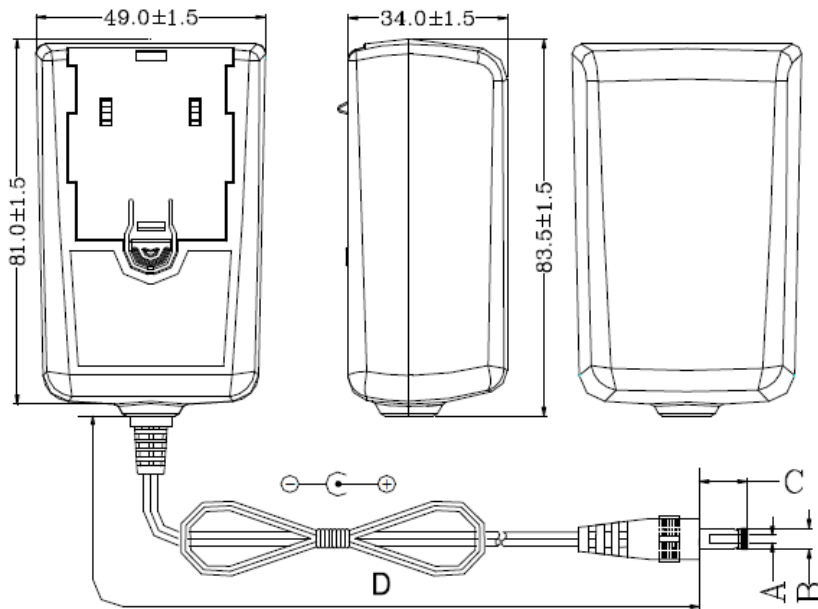
	Standard	Notes	Test Level	Performance Criterion
Conducted & Radiated	EN 55032	FCC Part 15	Pass	C
Harmonic Standard	EN 61000-3-2			
Voltage fluctuation	EN 6100-3-3	Voltage fluctuations & Flicker	Pass	

**EMC Immunity (2014/30/EU)**

	Standard	Notes	Performance Criterion
ESD	IEC 61000-4-2	Contact: +/- 4KV; Air: +/- 8KV	B
RS	IEC 61000-4-3	Frequency: 80-1000MHz. Field Strength: 3V/M ' 80% AM (1KHz)	A
EFT	IEC 61000-4-4	1.0KV on input AC power ports	B
Surge	IEC 61000-4-5	Line to Line: +/- 1KV (peak); Line to F.G: +/- 1KV (peak)	
Conducted	IEC 61000-4-6	CS: 0.15~ 80MHz, 3V <sub>rm</sub> , 80% AM, 1kHz	A
Dips and Interruptions	IEC 61000-4-11	V/D: >95% reduction for 0.5 period	B
		V/D:>30% 25 periods.	C
		V/I: >95%250 periods	C

**Mechanical Drawing**

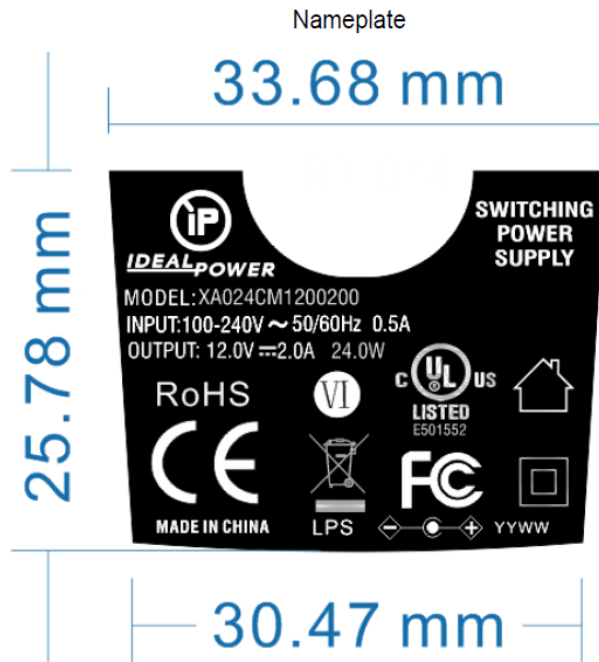
**External View**



UNIT:mm

	ΦA	ΦB	C	D
DIMENSION	2.1	5.5	12.0	1800
TOLERANCE	+0.1/-0	±0.1	±0.5	±50
REMARK	AWG20#/2C UL2468 BLACK "Tunning fork with groove"			

Label

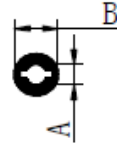
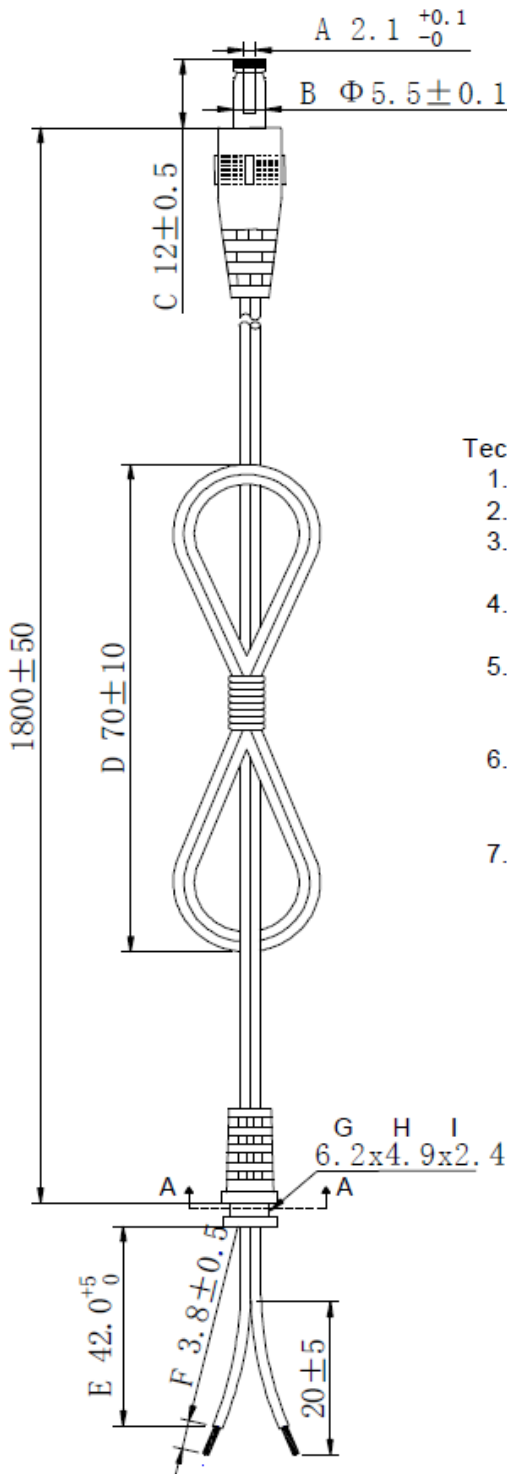


Unit: mm  
Tolerance: +0/-0.2  
Printed by Laser Printer

AC – DC

Cord Drawing

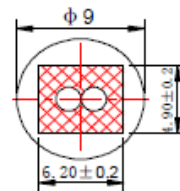
DC CORD



TUNNING FORK WITH GROOVE

Technical requirements:

1. Unit:mm
2. Unremarked Tolerance:±0.3;
3. 20AWGx2C, UL2468; one is black , the other is with white minus sign
4. Mode of connection: wire with white minus sign connect to inner tip
5. Plug bending test: load 200g weight, distance of hanging point and fulcrum: 30cm, angle: 60° 40 times/minute, min 2000 times
6. S/R bending test: load 20LB(9072g), continous 1minute and distance of hanging point and fulcrum is 30cm, displacement no more than 5mm
7. ROHS 2.0



SECTION A-A

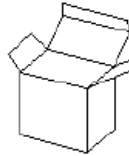
Total length(L) : 1800 ± 50 (IQC checks)

## Packaging

PRUDUCT/产品:



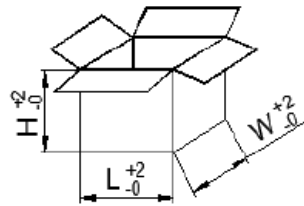
PRIMARY BOX/小白盒:



PAPERBOARD/平卡:



CARTON/纸箱:



### DIMENSION(UNIT IN cm):

	L	W	H
WHITE BOX	10	5	7.5
CARDBOARD	41.0	39.0	/
CARTON	42.0	40.0	23.0

### PACKING METHOD:

PAPERBOARD PLACEMENT METHOD	PUT A PAPERBOARD BETWEEN THE TOP AND BOTTOM, TOTAL 2PCS
PACKING METHOD	20PCS/LAYER X4 LAYERS
QTY	80PCS
N.W.	12.0kg
G.W.	13.5kg

### REMARK:

- STORAGE CONDITION  
TEMPERATURE: -10°C~+60°C  
RELATIVE HUMIDITY: 30%~80%
- STORAGE PERIOD: 6 MONTHES
- ANLISTATIG: NO REQUIREMENT
- PLEASE ADVISE IF ANY COMMENTS ABOUT THE PACKING INFORMATION. OTHERWISE, THIS INFORMATION IS DEFAULTED AS CUSTOMER APPROVAL, AND WILL BE APPLIED TO PRODUCTION.

Packaging

